

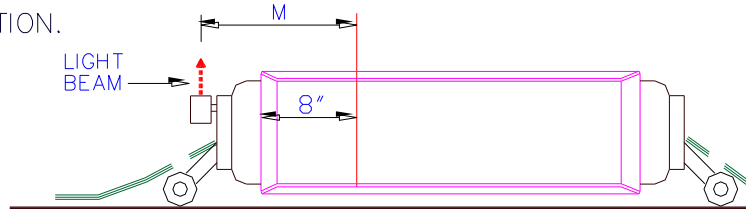


Use of the Marker Light

THE FIRST SLEEVE INSTALLATION.

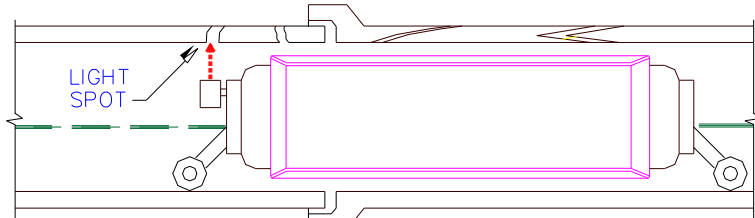
STEP 1.

TAKE DISTANCE "M" FROM MARKING LIGHT TO 8-inch LINE OR TO OTHER LINE WHICH MUST BE UNDER LIGHT SPOT WHEN INSTALLED.



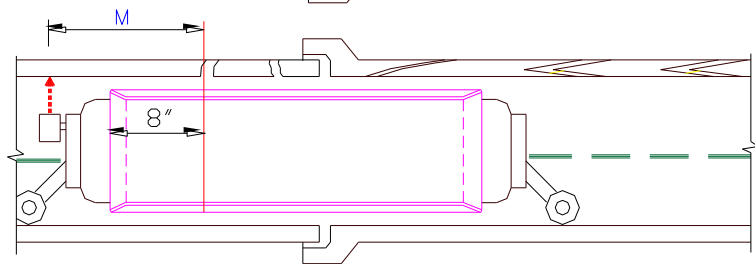
STEP 2.

MOVE PLUG TO LOCATION WHERE LIGHT SPOT IS MARKING THE END OF DAMAGE.



STEP 3.

MOVE BACK THE PLUG WITH SLEEVE BY THE RATE OF "M".



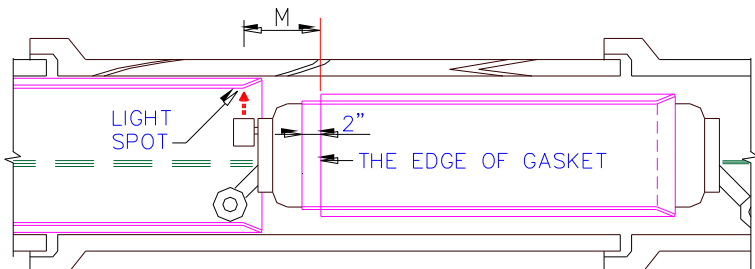
THE SECOND SLEEVE INSTALLATION.

STEP 1.

TAKE DISTANCE "M" BEFORE INSERTING PLUG INTO MANHOLE

STEP 2.

MOVE PLUG TO LOCATION WHERE LIGHT SPOT IS MARKING THE EDGE OF INSTALLED SLEEVE.



STEP 3.

MOVE BACK THE PLUG WITH SLEEVE BY THE RATE OF "M".

