


## Link-Pipe Jacketed End Sealer™ Installed Under Infiltration

### Installation Tips

<p><b>Jacketed End Sealer™ Sleeve</b></p>  <p>Product Series "PS" &amp; "HS"</p>	<p><b>Pipe Materials:</b></p> <ul style="list-style-type: none"> <li>➤ Concrete</li> <li>➤ Reinforced Concrete</li> <li>➤ Steel</li> <li>➤ Cast Iron</li> <li>➤ PVC</li> <li>➤ HDPE</li> </ul> <p><b>Pipe Diameter:</b> Ø4 Inch to 48 Inch</p>	<p>Link-Pipe Jacketed End Sealer™ Sleeve has two layers from different materials.* The inner perforated SST layer is mechanically locked in place and does not depend on internal or external pressure changes. The outer resilient layer is compressed between SST core and a host pipe wall. The diameter of this layer varies with the plastic host pipe or CIPP liner diameter which depends on operation pressure and temperature. The sealing efficiency of the Sleeve increases with higher operation (internal) pressure. *US patent Pending</p>
---	--	--

- Carefully remove End Sealer Sleeve from the package (Pic.1). Don't use sharp knife in order do not damage rubber parts in the box!
- Clean the Sleeve's Jacket, the Host Pipe and CIPP Liner areas to be located under the Sleeve.
- Apply **Sikaflex-221** Adhesive Sealant evenly to cover the Rubber Jacket in the area of the protruding O-Rings (Pics.2 & 3). The thickness of the applied adhesive bands is approximately 2 to 5mm. No gaps in the applied grout are allowed. To distribute adhesive evenly a paint roller is recommended (Fig.3).

Grasping Flares



Pic.1

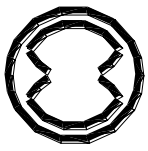


Pic.2



Pic.3

- To speed-up curing time evenly spray small quantity of water as mist on applied Adhesive (Pic.4).



- Carefully insert Sleeve into the Host Pipe (Pic.5) and orient the Sleeve in the Pipe so that the locking mechanism is located at 12 O'clock. It is obvious that the Sleeve area with bigger O-Rings should be located in the Host Pipe and area with smaller O-Rings and grasping flares should be located in the CIPP Liner. (Pic.6).



**Pic.4**

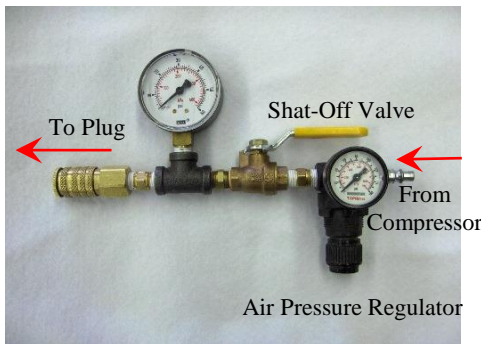


**Pic.5**



**Pic.6**

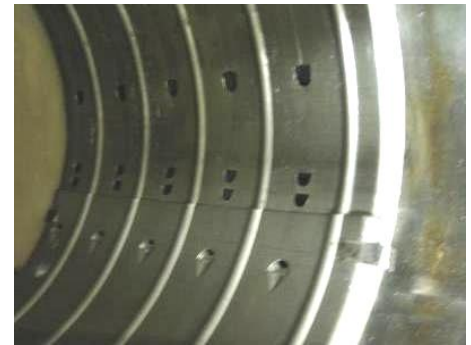
- Attach Air Hose to the Plug, and Air Pressure Regulator (Pic.7) to the upper end of the Air Hose. Connect Regulator with Air Compressor by another shorter Air Hose.  
**NOTE:** Remove wheels from the plug (you will not need them for this, non remote installation).
- Carefully insert Plug into, and center it in the Sleeve (Pic.8). To install the sleeve, bring the air pressure to 110 - 115psi.



**Pic.7**



**Pic.8**



**Pic.9**

- Release the air pressure, remove the Plug, and check if all locks are engaged (Pic.9); if some locks are not engaged, insert the plug again, move the plug to the unlocked end of the sleeve, apply 5psi more pressure and repeat the installation.
- Wait for 24 hours before putting the host pipe into service.

If you feel not comfortable with this instruction, CONTACT LINK-PIPE BEFORE INSTALLATION.

For more information, please call Lembit (Lem) Maimets or Danny Gan at 1-800-265-5696.